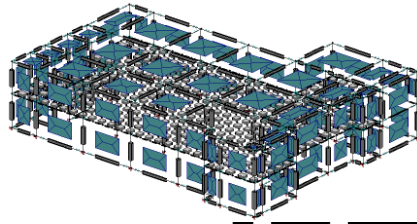


« SAFI is graphically illustrative technical software, used for structural analysis, for any type of structure.

It is integrative and interchangeable between a finite element analysis and a sophisticated structural analysis. It also has the capability to integrate all types of material of unique construction.

The graphics and technical information available is unparalleled.

Elie Chakieh, Peng.



Software :

- SAFI 3D
- SAFI STEEL
- STEEL Calculator

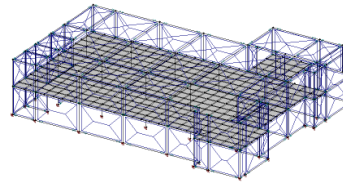


Engineers in charge:

**Elie Chakieh
&
Hellen Christodoulou**



Existing & Addition
with new sloped roof
& canopy



Location : Dollard des Ormeaux,
Montréal, Qc, Canada

Cost of structure: \$1.5M
Category: Commercial



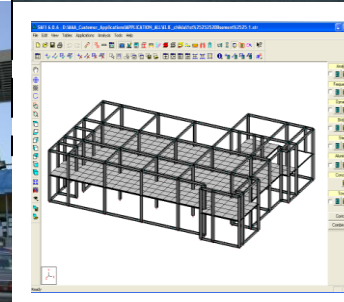
Earthquake and wind analysis,
suspended mezzanines &
cafeteria from 80ft, completely
exposed trusses integrated with
exterior columns on piles,
simulating spring action of
supports.



« SAFI 3D Steel was used
to simulate the existing
building, the new
receiving and loading
area and the new retail
area. »



« The New Marché Adonis
supermarket is a new building
incorporating an existing
structure. It is composed of
two sections, one being the
receiving and refrigeration
area and the other the retail
section. »



SAFI CASE STUDY

Our clients' projects success is our priority and our reason to exist. Therefore, we have decided to value them.

You can also send us your best projects!